

## Move-in / Move-out

**Official move-in date is Wednesday, March 22nd. Note, to ensure smooth traffic flow at the loading docks and on the exhibit hall floor, we do ask that you adhere to your move-in, move-out zone times, as follows. Official move-out is Friday, March 24th, beginning at 2 p.m. Please DO NOT breakdown your exhibit or exit the show before 2 p.m. on Friday, March 24th, as we have guests planning to attend until 2 p.m.**

<b>Area</b>	<b>Zone</b>
World of Safety & Health / Site Safety Orientation	Red
World of Construction Management, Sustainability and Design	Red
World of Concrete	Red
World of Highway Construction and Maintenance	Blue
World of Finishes - Painting, Drywall and Tile Contracting	Red
World of Plumbing	Red
World of Heating and Air Conditioning	Red
World of Electrical	Red
World of Heavy Equipment and Utility Contracting (Inside)	Blue
World of Heavy Equipment and Utility Contracting (Outside)	Blue
World of Landscape	Blue
World of Sheet Metal	Blue
World of Masonry	Red
World of Mining	Blue
World of Energy	Blue
Individual 10x10 Booth Spaces	Yellow
SkillsUSA Contests (Construction-related)	Red

<b>Zones</b>	<b>Move In Time (March 22nd)</b>	<b>Move Out Time (March 24th)</b>
Red	8:00 a.m. - Noon	4:00 p.m. - 6:00p.m.
Blue	Noon - 4:00 p.m.	2:00 p.m. - 4:00 p.m.
Yellow	4:00 p.m. - 7:00 p.m.	2:00 p.m. - 4:00 p.m.

## Shipping Information and Move In / Move Out Instructions

### -The address for the GICC is:

2000 Convention Center Concourse, College Park, GA 30337. Phone 770-997-3566

-If you are shipping small packages to the GICC (boxes of handouts, giveaways, etc.) please ship to the above address and send to the attention of the CEFGA Career Expo at 2000 Convention Center Concourse, College Park, GA 30337. Please ship to arrive no earlier than Monday, March 20th.

-Large items must be shipped to arrive on Wednesday, March 22nd between 8 a.m. and 8 p.m. Large items shipped before this date will not be accepted.

-All large deliveries will be made on Wednesday, March 22nd between 8 a.m. and 8 p.m. through the loading docks at Exhibit Hall B, C or D. Note, no deliveries will be accepted before 8 a.m. on Wednesday, March 22nd.

-All deliveries should be made during your designated load-in ZONE time. If you are unsure of your load-in ZONE time, please contact the person who asked you to make the delivery. If you are still unsure, please contact Tina Robison at 404-333-2487.

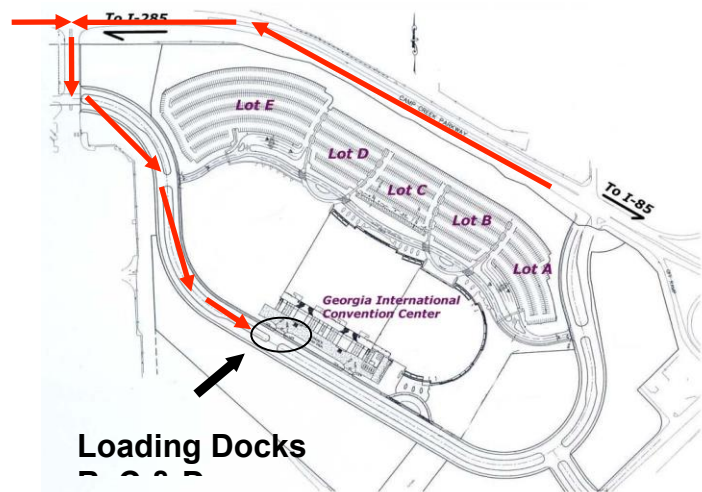
-Please be sure to follow directions to the GICC listed on the next page of this document. Your GPS system will likely track you to the main entrance of the GICC. Please do not use this entrance. We are asking that all load-in deliveries be made using the GICC back entrance off of Airport Drive (see directions on next page).

-Once in the Loading Dock area, you will have 20 minutes to off-load your delivery. It is important that you not leave your vehicle for more than 20 minutes in the loading dock area. There will be police officers monitoring the load-in/load-out area (think airport pick-up/drop-off zones).

-Once your load-off is complete, you will move your vehicle to Parking Lot B, C or D in front of the Exhibit Hall (See GICC Campus Map). Note, you will NOT need a parking pass this year.

-All load-out will take place on the loading docks of Exhibit Hall B, C & D. The same rules apply. You will not be permitted to leave your car in the load-in/load-out area for more than 20 minutes. So, please be sure that everything is staged and ready to be picked up before pulling your car/truck into the load-in/load-out area.

-Additional information about the 2017 CareerExpo and SkillsUSA Championships may be found at [www.cefga.org](http://www.cefga.org) or you may contact CEFGA Staff Tina Robison at 404-333-2487.



## Move In Directions for March 22nd

**NOTE: These Directions are FOR MOVE IN ONLY. For general directions see [cefga.org](http://cefga.org)**

From...

### Downtown Atlanta & North Atlanta: I-75/85 South

Take I-85 South. Exit Camp Creek Parkway (exit #72). Follow the signs for Camp Creek Parkway. Once on Camp Creek Parkway, go past the main entrance to the GICC on left and proceed approximately ½ mile to Airport Drive. Turn left onto Airport Drive and in less than 500 feet turn left onto Convention Center Concourse (this road is not marked, but it is the only road to the left before you enter Delta Employee Parking). Be sure to stay to the right, as this road is split by a median. You will stay to the right and follow Convention Center Concourse to the back of the Convention Center. On your left will be the loading docks for Exhibit Halls B, C & D.

### I-285 North: Cobb County, Marietta, Smyrna, Cumberland

I-285 South to Camp Creek Parkway (exit #2). Turn left onto Camp Creek Parkway and travel approximately 2 miles through 6 traffic lights. At the 7th traffic light, turn right onto Airport Drive. In less than 500 feet turn left onto Convention Center Concourse (this road is not marked, but it is the only road to the left before you enter Delta Employee Parking). Be sure to stay to the right, as this road is split by a median. You will stay to the right and follow Convention Center Concourse to the back of the Convention Center. On your left will be the loading docks for Exhibit Halls B, C & D.

### I-20 West: Six Flags, Birmingham

I-20 East to I-285 South. Exit Camp Creek Parkway (exit #2). Turn left onto Camp Creek Parkway and travel approximately 2 miles through 6 traffic lights. At the 7th traffic light, turn right onto Airport Drive. In less than 500 feet turn left onto Convention Center Concourse (this road is not marked, but it is the only road to the left before you enter Delta Employee Parking). Be sure to stay to the right, as this road is split by a median. You will stay to the right and follow Convention Center Concourse to the back of the Convention Center. On your left will be the loading docks for Exhibit Halls B, C & D.

### I-20 and I-285 East: Tucker, Stone Mountain, Conyers, Augusta, Columbia

I-285 South to I-85 North, Atlanta Airport/Atlanta (exit #61). Follow the signs to I-85 North, Atlanta. I-85 North to Camp Creek Parkway (exit #72). Once on Camp Creek Parkway, go past the main entrance to the GICC on left and proceed approximately ½ mile to Airport Drive. Turn left onto Airport Drive and in less than 500 feet turn left onto Convention Center Concourse (this road is not marked, but it is the only road to the left before you enter Delta Employee Parking). Be sure to stay to the right, as this road is split by a median. You will stay to the right and follow Convention Center Concourse to the back of the Convention Center. On your left will be the loading docks for Exhibit Halls B, C & D.

### I-85 South: Newnan, LaGrange, Columbus, Montgomery

I-85 North to Camp Creek Parkway (exit #72). Once on Camp Creek Parkway, go past the main entrance to the GICC on left and proceed approximately ½ mile to Airport Drive. Turn left onto Airport Drive and then in less than 500 feet turn left onto Convention Center Concourse (this road is not marked, but it is the only road to the left before you enter Delta Employee Parking). Be sure to stay to the right, as this road is split by a median. You will stay to the right and follow Convention Center Concourse to the back of the Convention Center. On your left will be the loading docks for Exhibit Halls B, C & D.

### I-75 South: Macon

I-75 North to I-285 West. I-285 West to I-85 North, Atlanta Airport/Atlanta (exit #61). Follow the signs to I-85 North, Atlanta. I-85 North to Camp Creek Parkway (exit #72). Once on Camp Creek Parkway, go past the main entrance to the GICC on left and proceed approximately ½ mile to Airport Drive. Turn left onto Airport Drive and then in less than 500 feet turn left onto Convention Center Concourse (this road is not marked, but it is the only road to the left before you enter Delta Employee Parking). Be sure to stay to the right, as this road is split by a median. You will stay to the right and follow Convention Center Concourse to the back of the Convention Center. On your left will be the loading docks for Exhibit Halls B, C & D.